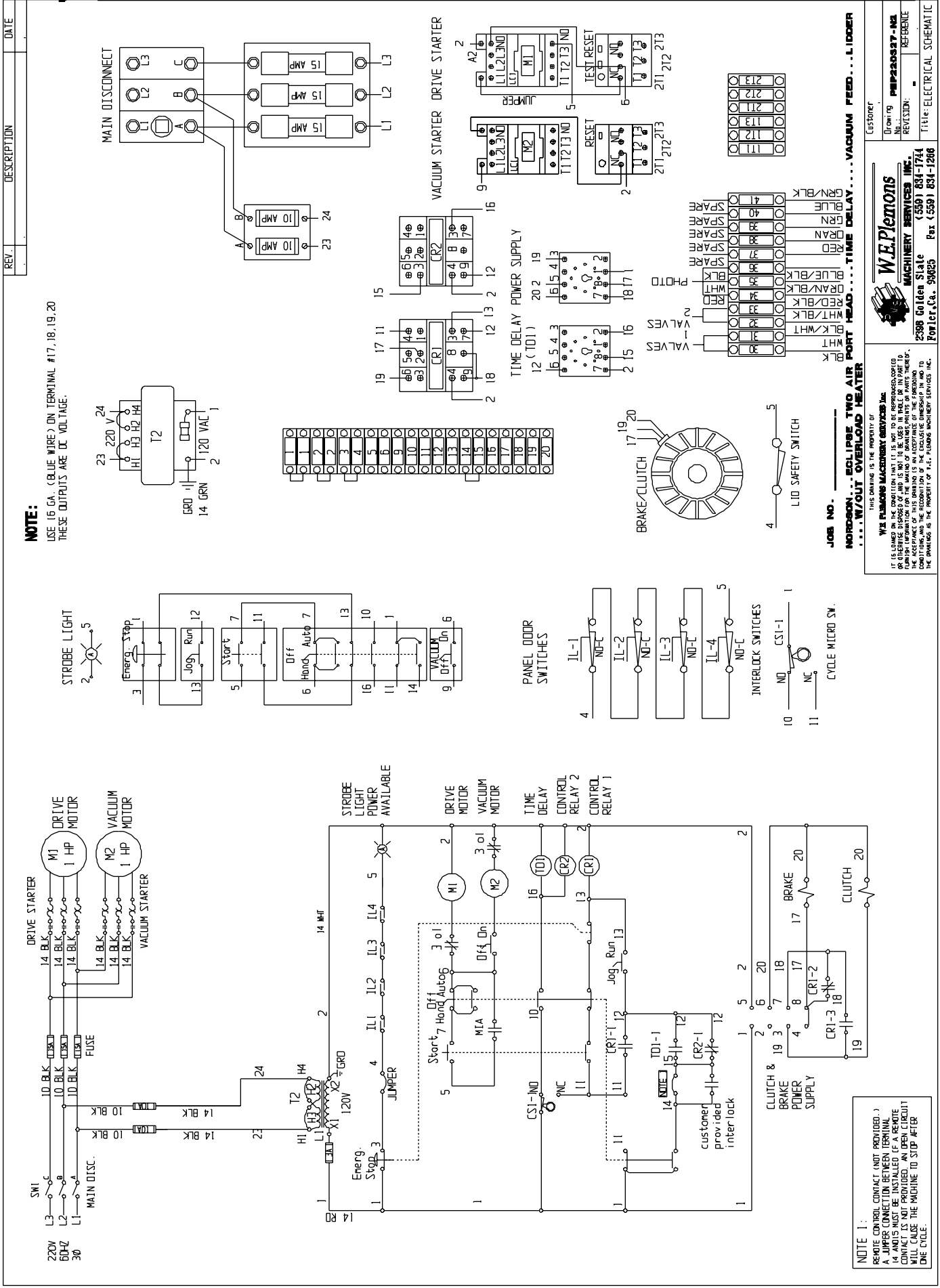
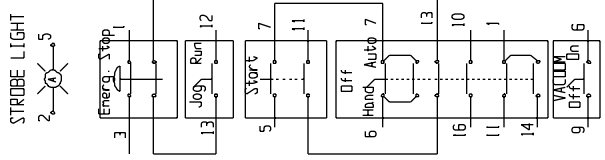
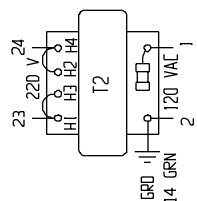


Electrical Prints

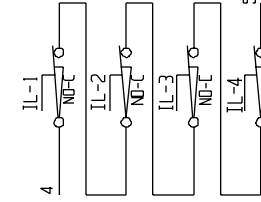


NOTE:

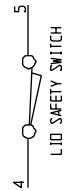
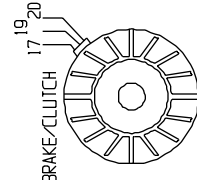
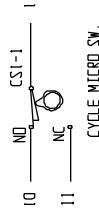
USE 16 GA. (BLUE WIRE) ON TERMINAL #17, 18, 19, 20
THESE OUTPUTS ARE DC VOLTAGE.



PANEL DOOR SWITCHES



INTERLOCK SWITCHES



JOB NO.

NO. DRAWING IS THE PROPERTY OF
W. E. PLEMONS MACHINERY SERVICES, INC.
... WITHOUT OVERLOAD HEATER

IF A CUSTOMER REQUESTS A PART NOT LISTED IN THIS PART LIST, THE CUSTOMER SHALL BE RESPONSIBLE FOR OBTAINING THE PART FROM ANOTHER SOURCE. THE PART MUST BE IDENTICAL TO THE PART LISTED IN THIS PART LIST. THE PART MUST BE IDENTICAL TO THE PART LISTED IN THIS PART LIST. THE PART MUST BE IDENTICAL TO THE PART LISTED IN THIS PART LIST.

W. E. Plemons
MACHINERY SERVICES, INC.
2398 Golden Slate
Fort Lee, Ca. 94085
Tel: (559) 834-1744
Fax: (559) 834-1286

NOTE 1:
REMOTE CONTROL CONTACT (NOT PROVIDED.)
A JUMPER CONNECTION BETWEEN TERMINAL
14 AND 5 MUST BE INSTALLED (IF A REMOTE
CONTROL IS USED). THE JUMPER MUST BE
INSTALLED BEFORE THE MACHINE TO STOP AFTER
ONE CYCLE.

REV.	DESCRIPTION	DATE
------	-------------	------

Customer	
Drawing No.	PEP220327-N2
REV. NO.	
REVISION	
REFERENCE	
TITLE	ELECTRICAL SCHEMATIC

PEP220327-N2